



Main features

Printing type



Barcode



Logos



Alphanumeric text

Maximum height



0-15 mm



16-100 mm



Above 100 mm

Printing surfaces



Primary packaging



Secondary packaging



Raw material

INDUSTRIAL RELIABILITY

Stainless steel structure IP55 suitable for several industrial environments and renewed hydraulic system for assuring high performance.

REVOLUTIONARY SOFTWARE

ORKESTRA, New ZANASI management software on stable and flexible operating system. A new coding experience with customizable user interface for single operator and graphic editor with stretch e drag & drop functions.

TOTAL CONNECTION AND INTEGRATION

Advanced and versatile integration through Ethernet, USB and serial ports. Rapid and flexible external database management with fixed and variable text field types.

Z4700

TECHNICAL SPECIFICATIONS

PRINTING CHARACTERISTICS

- Up to 4 lines of print
- Characters height from .8 mm to 12 mm (0.032" – 0.47")
- Line speed capability: up to 400 mt/min (1320 ft/min)
- Print rate: up to 2136 ct/sec
- Messages and logos storage: up to 4 GB with expandable micro SD memory
- Up to 6800 stroke per message
- Fixed and variable text field types (with operator, automatic or external)
- Text field placing is freely selectable
- Available fonts: 5x4, 5x5, 7x4, 7x5, 9x7, 10x8, 16x10, 24x16
- Space between characters is freely selectable
- Print intensity is freely selectable
- Rapid images, shapes and lines creation from touch-screen display
- Automatic date, time, offsets and expiry date multifunction
- Incrementing/decreasing alphanumeric product counters up to 9 digits
- Metric repeat print – message function
- Customizable message repeat with single print start
- Field orientation: 0°, 90°, 180°, 270°
- Print with text rotation angle
- Coding throw distance up to 90 mm - 3.54" (single line from minimum 3 mm - 0.118")

BAR CODES

- 2/5 Industrial, UPC-A, CODE 39, EAN 13, CODE 128 (A,B,C), EAN 128 (A,B,C), 2D - Datamatrix, ITF (A,B,C)

CONTROL UNIT CHARACTERISTICS

- 10.1" TFT full color anti-reflection high contrast LED touch-screen
- Stainless steel structure AISI 304
- IP55 rating, no compressed air
- Conduit length: 2 mt – 6.56 ft (4 mt – 13.1 ft optional)

GENERAL FEATURES

- Exclusive customizable user interface for single operator (functionality, language and alphabets)
- Intuitive user interface with graphic icons
- Innovative graphic editor with stretch and drag & drop functions with smartphone technology
- User interface and virtual keyboard with foreign languages and alphabets
- Automatic flushing with solvent recycling in both start up and shut down
- Low consumption thanks to the enhanced recycling system
- Message storage with file name
- Print parameters storage in the messages

- Check message dimension
- Multi-level access with login
- Report function for executed printing counter
- On line help and user manual with contextual photos and videos

PRINTHEAD

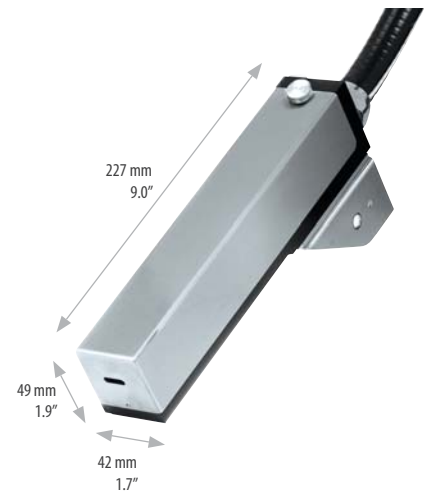
- Stainless steel and aluminium structure hermetically sealed
- Micro Print Nozzle for high quality resolution print (optional)
- Auto-phasing of ink stream for consistent print quality
- Microjet nozzle cleaning function
- Wide range of standard, pigmented, bio and MEK-free inks
- Conduit inlet at 90° (optional)
- Internal Supply Positive Air Function
- 90° model for reduced spaces (optional)

EXTERNAL CONNECTIONS

- Serial connection RS232 and RS485/422
- Ethernet interface for LAN 10/100 connection
- USB port version 2.0
- Sensor management for product reading
- System ready output
- Shaft Encoder input for variable speed production lines
- External alarm outputs with Optional lighted column
- Parallel interface BCD, 2 bit
- Scanner connection for printed bar code validation or index message selection

ENVIRONMENT/ELECTRICAL REQUIREMENTS

- Temperature: from 5° to 45° C (40° - 113°F)
- Humidity: 10 - 90% (non-condensing)
- Single Phase, 85 - 240 Vac, 50 - 60 Hz, 100 VA



Use a QR code reader to see the product page