

THERMAL TRANSFER OVERPRINTERS SVM 32-70 I SVM 32 C



SPECIFICATIONS

High performance, low cost thermal transfer printers are versatile enough for printing fixed and variable text, data and graphics. It is ideal for reproducing bar codes, real time, sell-by dates, batch numbers, prices, source codes and much more. Brackets can be easily integrated to the machines such as vertical and horizontal from-fill-seal systems, primary labellers, thermo formers and overwrapping equipments.

The units are suitable for all intermittent and continuous applications within the food, pharmaceutical cosmetics, and automobile spare parts industries has the capability to code all kinds of 1D barcodes and 2D data-matrix codes.

KEY FEATURES

- Patented long life mechanical design needs no maintenance
- 32mm x 70mm print area for intermittent and 32x125mm for continuous
 - 600m ribbon capacity
 - Print Quality 300dpi (12 dot / inch).
- The USB can be used to:
 - Move messages and configurations between printers for local based set-up
 - Back-up and restore messages and printer settings
 - Large memory for all label formats to be stored locally.

Savema

Marking and Coding Machines

www.savema.com.tr

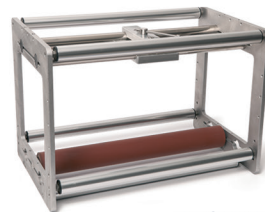
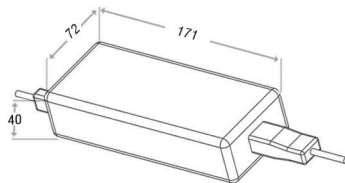
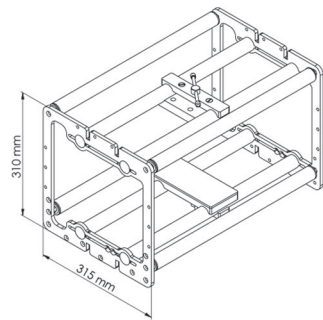
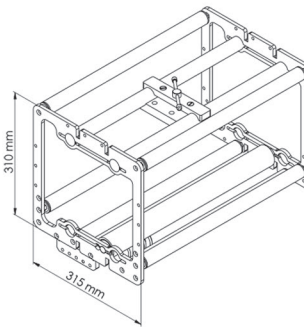
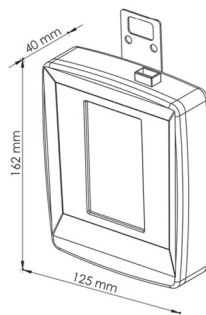
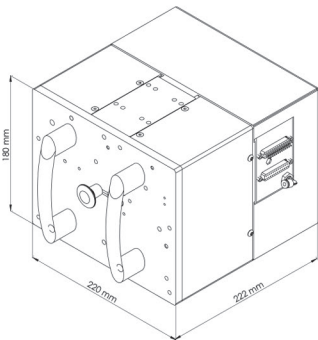
SVM 32-70 I // SVM 32 C

Specifications

	32-70 I	32 C
Print Area	Width 32mm Length 70mm	Width 32mm Length 125mm
Resolution	12 dots/mm (300dpi) horizontally and vertically	
Print Speed	Up to 400mm / second	600mm / second
Production	350 prints/min (in one line)	500 prints/min
Thermal Ribbon	600 meter (656 yds.) loaded ribbon	
Memory	5000 text memory, 512 Mb. Ram, 1 Gb Storage (Onboard), Up to 8 Gb SD Memory Support, Up to 16 Gb USB Memory Support	
Power Supply	110/220/240 V 50/60 Hz	
Air Supply	min. 1 bar - max. 4 bar	
Wight (printer)	9,4 kg	
Dimensions	180mm H x 220mm W x 222mm D	
Outputs	Machine on error (failsafe) - image ready, power on, print per minute etc	
Ribbon Widths	22 mm and 35 mm. (0,9" - 1,4")	
Operating Temperature	5° - 50°C (41° - 104°F)	
Control Panel	4,3" Touch Screen Panel	

Programming

Fields	Real DATE/Time. Text, Barcode, 2D Barcodes, Logo, Counter (Serial No), Shift Code, Shape, Currency
Barcodes	1 D Barcodes (EAN-13, EAN-8, CODE 128, CODE 39, ITF -2 of 5, ITF 14, CODABAR, UPC-A, UPC-E) 2 D Barcodes (Datamatrix, QR Codes. PDF 41 7, Aztec code, Semacode, Macro PDF 417) ITF14, RSS (GS-1 DATABAR COMPOSITE)
Communications	RS-232 (PC), LAN, USB Multi-language (14) support standard
Pc Programmes	SAYASIS Label Program



continuous



Intermittent